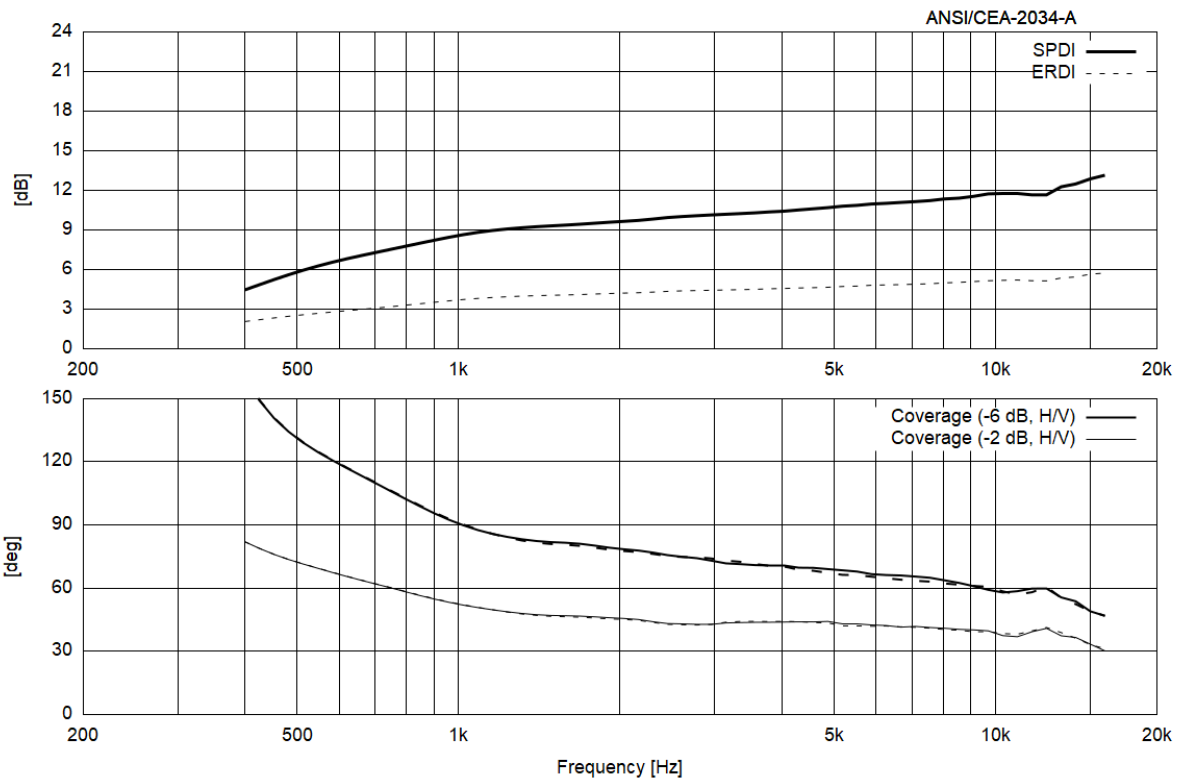
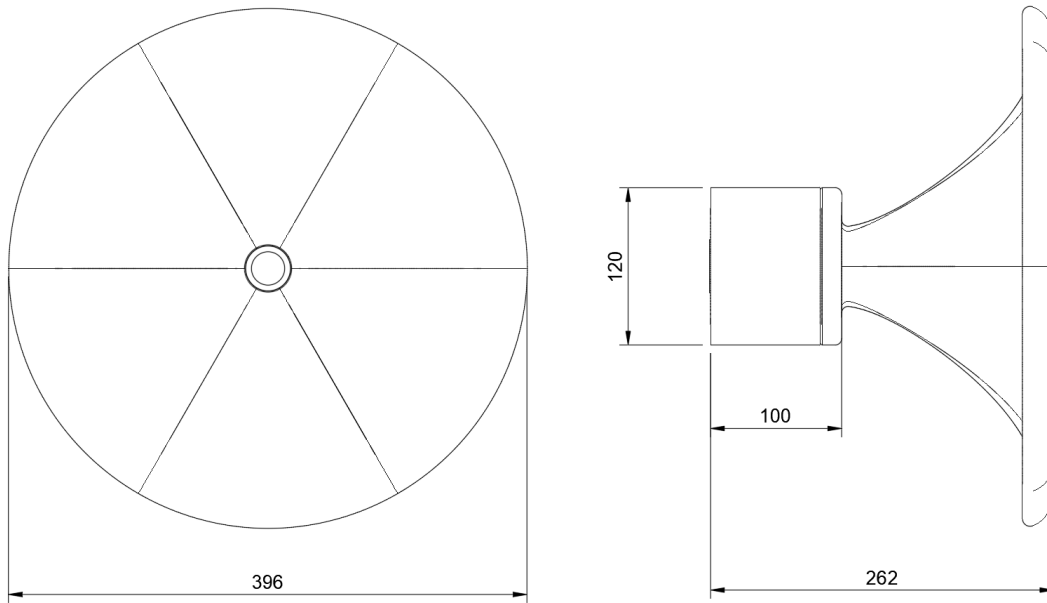
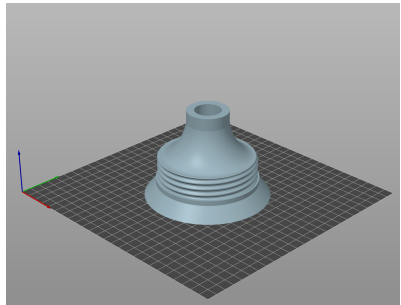
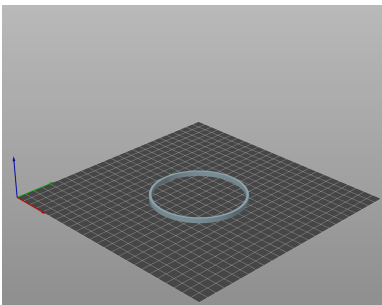
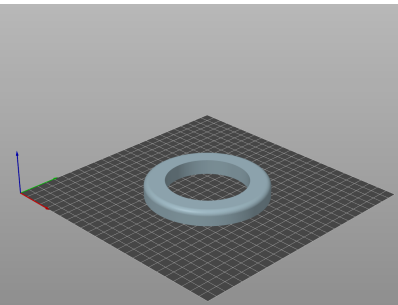
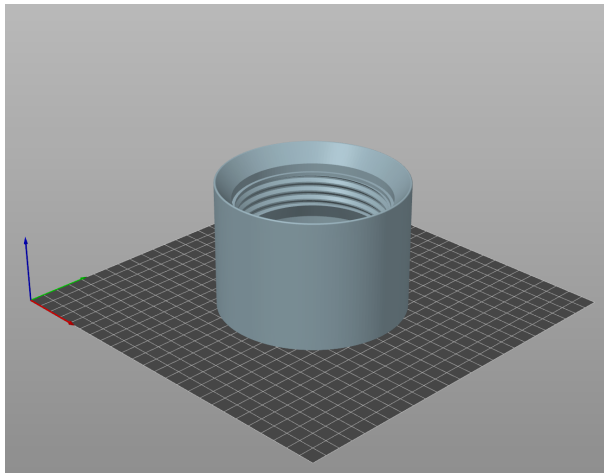
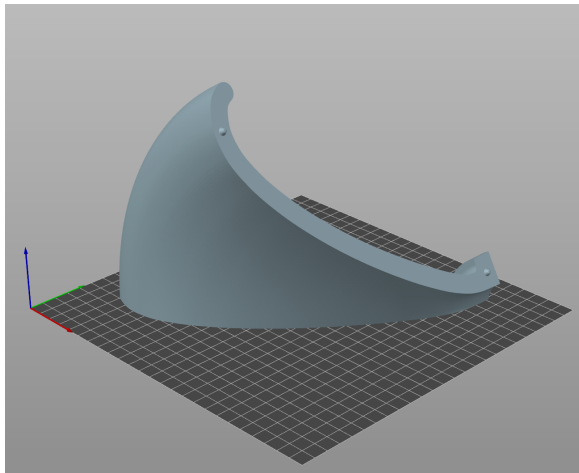
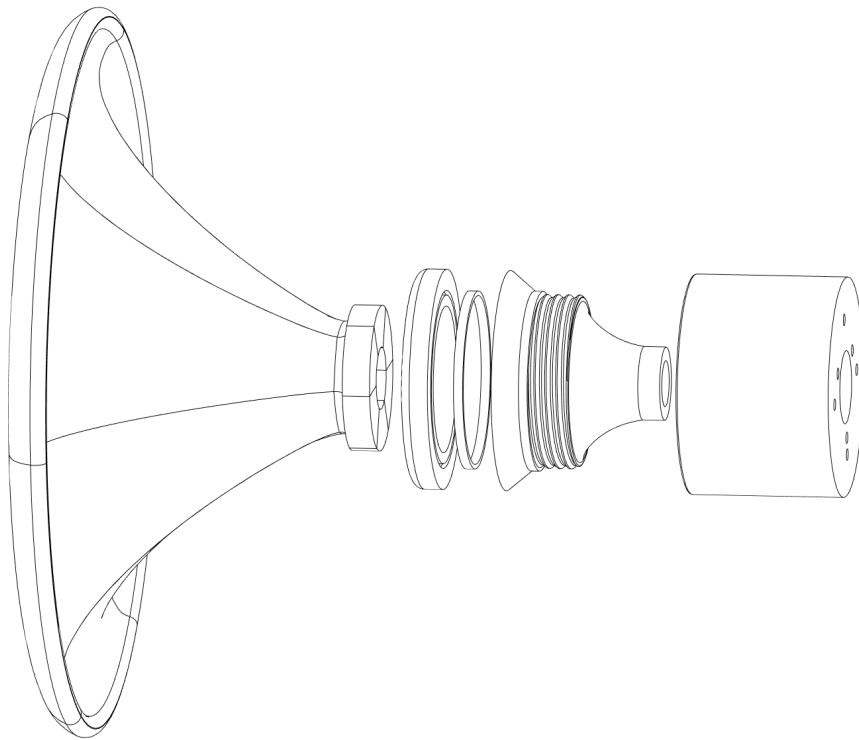


Throat diameter	25.4	mm	(1")
Overall diameter	396	mm	(15.6")
Total depth	262	mm	(10.35")
Input throat angle	6	deg	
Mounting flange diameter	120	mm	(4.72")
Driver mounting holes	4x \varnothing 76 mm + 3x \varnothing 57 mm		
Expected usable frequency	600	Hz	(driver dependent)





3D print kit is available via Cults3D.